

GREY-N-LED

IP 66 /  zone 2, 22



FTZÚ 20 ATEX 0093X



Application: Dustproof LED floodlight series GREY-N-LED is designed for lighting areas with danger of explosion. Luminaire is certified by FTZÚ OSTRAVA -RADVANICE (certificate FTZÚ 20 ATEX 0093X).

Ballast: electronic- 220-240V, 50/60Hz

Light source: LED, 4000K, CRI +70, MacAdam3

Body: Die-cast aluminium, black colour, RAL 9005, matt

Cover: Hardened safety glass

Optics: S – symmetrical wide beam radiant optics
 AS – asymmetrical wide beam radiant optics
 H – symmetrical narrow beam radiant optics
 AH – asymmetrical narrow beam radiant optics

Fastening: surface mounted by means of adjustable brackets

Connection: screwless three-pole terminal block, max. cross section of wires 2,5 mm²

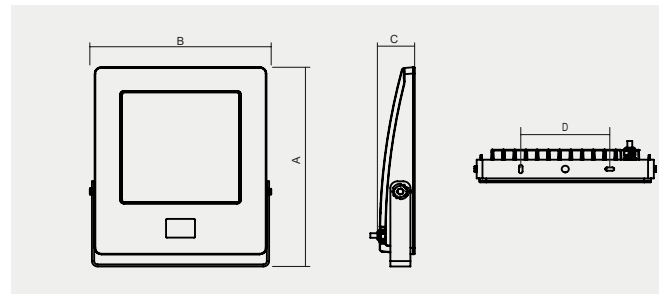
Standard equipment: 1pc EX plastic cable gland M20 for diameter of cable 7-12mm

Calculated lifetime – LED modules: L80B10 ta50°C – 60 000h

GREY-N-LED

 II 3G Ex nR IIC T6 Gc

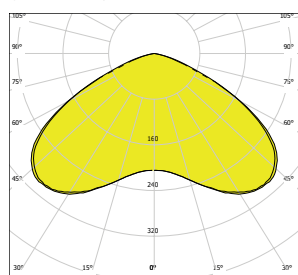
 II 3D Ex tc IIIC T85°C Dc



Standard order number	Name	Lighting fixture luminous flux (lm)	Power input (W)	System efficiency (lm/W)	Ta max (°C)	Lighting fixture dimensions A x B x C (mm)	Mounting hole (mm)	Weight (kg)
056900	GREY-N-LED-S-17000-4K, IP66	15933	103	155	60	480x400x80	200	10
056904	GREY-N-LED-S-18500-4K, IP66	17191	113	152	55	480x400x80	200	10
056908	GREY-N-LED-S-21000-4K, IP66	19631	133	148	50	480x400x80	200	10
056912	GREY-N-LED-S-24500-4K, IP66	23108	164	141	55	480x400x80	200	10
056916	GREY-N-LED-S-29500-4K, IP66	27450	206	133	45	480x400x80	200	10

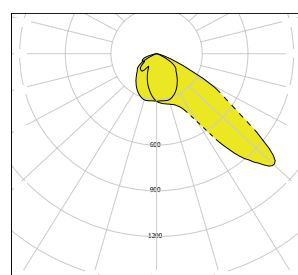
Tolerance of luminous flux and power input of the lighting fixture +/- 10%

GREY-N-LED-S



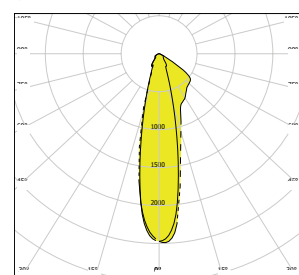
— C0-C180 - - - - C90-C270

GREY-N-LED-AH



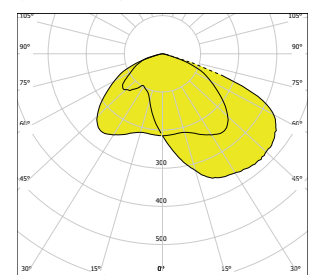
— C0-C180 - - - - C90-C270

GREY-N-LED-H



— C0-C180 - - - - C90-C270

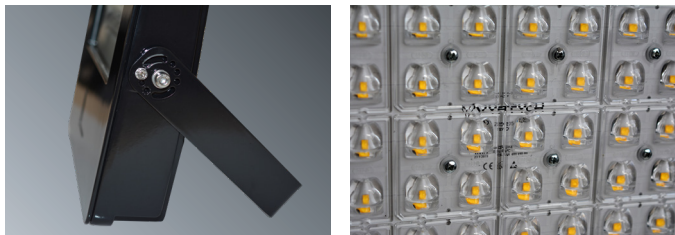
GREY-N-LED-AS



— C0-C180 - - - - C90-C270

Lighting fixtures for areas with danger of explosion

Lighting fixture detail



On request

DIM – electronic dimming ballast (DALI)

2.7K-6.5K - colour temperature

Standard order number	AS	H	AH
056900	056901	056902	056903
056904	056905	056906	056907
056912	056909	056910	056911
056916	056913	056914	056915
056936	056917	056918	056919

Use of lighting fixtures in areas with danger of explosion	Marking of external influences	Area classification	
		Marking	Directive
Danger of explosion of flammable dusts	BE3N1	ZONE 22	ČSN EN 60079-14, ČSN EN 60079-10-2
Danger of explosion of flammable gases and vapours	BE3N2	ZONE 2	ČSN EN 60079-14, ČSN EN 60079-10-1