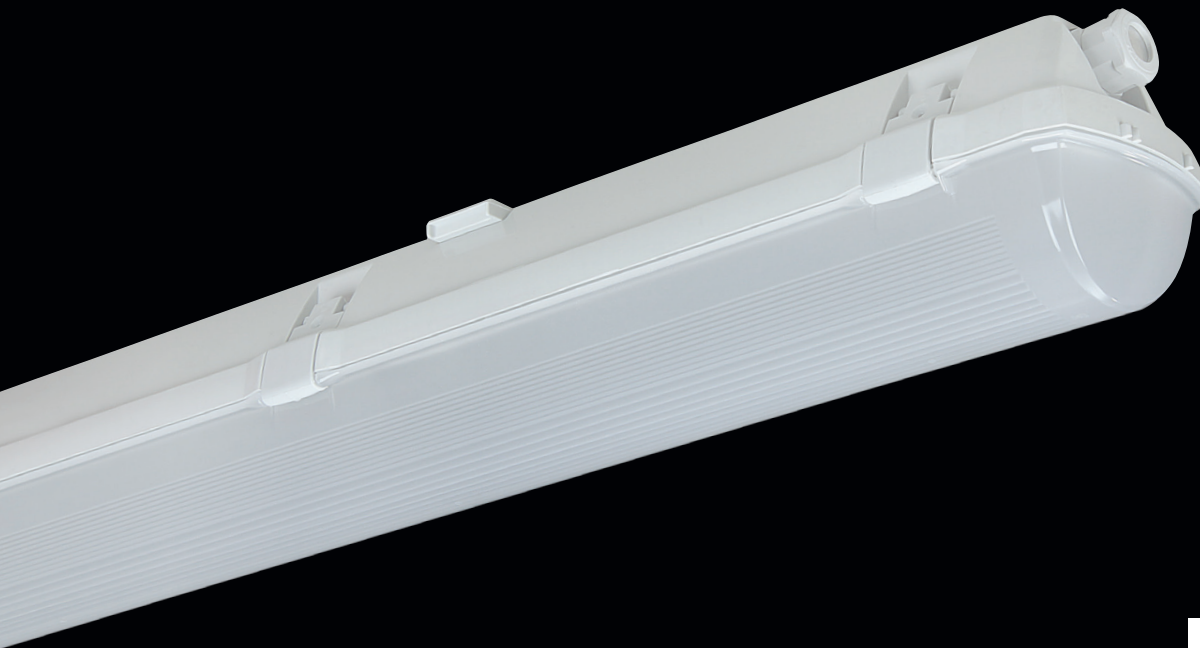


PRIMA LED ABS



BIM
ready

... dustproof, waterproof and chemically resistant.

USE

The light fitting is suitable for the environment where ammoniac fumes, lixivants, alkaline compounds and hot water (hydrolyses) can be present. We recommend this light fitting for agricultural operations, stables, car washing lines, warehouses, mechanical workshops and laboratories without a danger of explosion of gas, dust and combustible fumes.

The light fitting is resistant to dust, moisture and spouting water. The body made of ABS and the diffuser made of AC have increased chemical resistance.

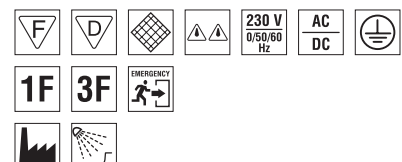
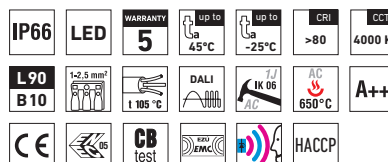
(It is necessary to consider exhalation in the air which can reduce the usability of the plastic at installations in an aggressive environment, see also page 193).

Always open the cover of the light fitting out of an environment with aggressive volatile substances.

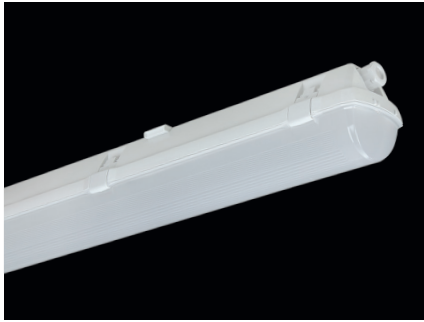
ADVANTAGES

- Light fitting protection **IP66**
- Maximum ambient temperature up to **t_a = 45 °C**
- Lifetime: 50,000 hours / L90B10
- Diffuser: translucent acrylate (AC) = high chemical resistance
- Body: dark grey (ABS) = high chemical resistance
- Up to 45 % lower electricity consumption when compared to tubes T5
- In DALI version possibility of constant luminous flux for whole lifetime (CLO)
- Constant luminous flux even in ambient temperature of -25 °C
- Standard model - CRI > 80: 4000 K

- At request CRI > 80: 3000 K, 5000 K, 6500 K, CRI > 90: 3000 K, 4000 K
- It can be delivered in dimmable or emergency version
- Certification: ESČ, ENEC, CB, HACCP



PRIMA LED ABS, ABSc



TECHNICAL DESCRIPTION

- Light fitting protection: IP66
- Maximum ambient temperature: $t_a = 45^\circ\text{C}$, Maximum ambient temperature: $t_a = 25^\circ\text{C}$ (version with emergency back-up source for 1 or 3 hours; M1h, M3h)
- Maximum system efficacy: 134 lm/W
- The watt and lumen values can vary by $\pm 7,5\%$
- Standard model - CRI > 80: 4000 K
- Lifetime: 50,000 hours / L90B10
- Diffuser: translucent acrylate (AC), UV stable, chemically resistant
- Body: dark grey (ABS), UV stable, chemically resistant
- Reflector: steel sheet, white colour (RAL 9003)
- Clips: polyamide + 15 % glass fibre or stainless steel + polyamide
- Sealing: polyurethane (PUR), foamed body groove
- Cable glands: screwed PG 13.5, or rubber (SBS)
- Distance part: polyamide + 10 % glass fibre
- Terminal block: screwless, three-pole (basic version), or screwed
- Installation: package contains stainless hooks and stainless brackets
- Electric equipment: LED modules, current driver or current driver DALI

Code	Type	Max. ambient temperature [°C]	Luminous flux of LED modules [lm]	Luminous flux of light fitting [lm]	Power consumption [W]	System efficacy [lm/W]	Net weight [kg]	A [mm]	D [mm]
For ambient temperature $t_a = 45^\circ\text{C}$ - body: dark grey ABS - diffuser: translucent acrylate									
67010	PRIMA LED 1.2ft ABS 1300/840	45	1300	1260	10	126	1,3	662	350
67020	PRIMA LED 1.2ft ABS 1600/840	45	1600	1510	12	126	1,2	662	350
67030	PRIMA LED 1.2ft ABS 2200/840	40	2200	1950	15	130	1,3	662	350
67040	PRIMA LED 1.4ft ABS 2600/840	45	2600	2320	18	129	1,9	1272	700
67050	PRIMA LED 1.4ft ABS 3200/840	45	3200	2860	22	130	1,7	1272	700
67060	PRIMA LED 1.4ft ABS 4400/840	40	4400	3920	30	131	1,9	1272	700
67460	PRIMA LED 1.4ft ABS 6400/840	40	6400	5650	43	131	1,9	1272	700
67070	PRIMA LED 1.5ft ABS 3250/840	45	3250	2810	22	128	2,3	1572	940
67080	PRIMA LED 1.5ft ABS 4000/840	45	4000	3530	27	131	2,2	1572	940
67090	PRIMA LED 1.5ft ABS 5500/840	40	5500	4940	37	134	2,3	1572	940
67490	PRIMA LED 1.5ft ABS 8000/840	40	8000	7090	54	131	2,3	1572	940

67020 PRIMA LED 1.2ft ABS 1600/840 = suitable replacement for T8 fl. tube light fitting PRIMA 118 - 1x18 W
 67050 PRIMA LED 1.4ft ABS 3200/840 = suitable replacement for T8 fl. tube light fitting PRIMA 136 - 1x36 W
 67460 PRIMA LED 1.4ft ABS 6400/840 = suitable replacement for T8 fl. tube light fitting PRIMA 236 - 2x36 W
 67080 PRIMA LED 1.5ft ABS 4000/840 = suitable replacement for T8 fl. tube light fitting PRIMA 158 - 1x58 W
 67490 PRIMA LED 1.5ft ABS 8000/840 = suitable replacement for T8 fl. tube light fitting PRIMA 258 - 2x58 W

PRIMA LED ABS

Non-dimmable driver - plastic clips

Code	Type	1F	3F	M1h	M3h	3F M1h	3F M3h
67010	PRIMA LED 1.2ft ABS 1300/840	x	x	x	x	x	x
67020	PRIMA LED 1.2ft ABS 1600/840	x	x	x	x	x	x
67030	PRIMA LED 1.2ft ABS 2200/840	x	x	x	x	x	x
67040	PRIMA LED 1.4ft ABS 2600/840	67140	67340	67044	67045	67344	67345
67050	PRIMA LED 1.4ft ABS 3200/840	67150	67350	67054	67055	67354	67355
67060	PRIMA LED 1.4ft ABS 4400/840	67160	67360	67064	67065	67364	67365
67460	PRIMA LED 1.4ft ABS 6400/840	67461	67462	x	x	x	x
67070	PRIMA LED 1.5ft ABS 3250/840	67170	67370	67074	67075	67374	67375
67080	PRIMA LED 1.5ft ABS 4000/840	67180	67380	67084	67085	67384	67385
67090	PRIMA LED 1.5ft ABS 5500/840	67190	67390	67094	67095	67394	67395
67490	PRIMA LED 1.5ft ABS 8000/840	67491	67492	x	x	x	x

PRIMA LED ABSc

Non-dimmable driver - stainless clips (c)

Code	Type	1F	3F	M1h	M3h	3F M1h	3F M3h
67210	PRIMA LED 1.2ft ABSc 1300/840	x	x	x	x	x	x
67220	PRIMA LED 1.2ft ABSc 1600/840	x	x	x	x	x	x
67230	PRIMA LED 1.2ft ABSc 2200/840	x	x	x	x	x	x
67240	PRIMA LED 1.4ft ABSc 2600/840	67540	67640	67244	67245	67644	67645
67250	PRIMA LED 1.4ft ABSc 3200/840	67550	67650	67254	67255	67654	67655
67260	PRIMA LED 1.4ft ABSc 4400/840	67560	67660	67264	67265	67664	67665
67760	PRIMA LED 1.4ft ABSc 6400/840	67761	67762	x	x	x	x
67270	PRIMA LED 1.5ft ABSc 3250/840	67570	67670	67274	67275	67674	67675
67280	PRIMA LED 1.5ft ABSc 4000/840	67580	67680	67284	67285	67684	67685
67290	PRIMA LED 1.5ft ABSc 5500/840	67590	67690	67294	67295	67694	67695
67790	PRIMA LED 1.5ft ABSc 8000/840	67791	67792	x	x	x	x

Example of type marking: 67644 = PRIMA LED 1.4ft ABS 2600/840 **3F M1h**

PRIMA LED ABS DALI

Digital dimmable driver DALI - plastic clips

Code	Type	1F	3F	M1h	M3h	3F M1h	3F M3h
67013	PRIMA LED 1.2ft ABS 1300/840 DALI	x	x	x	x	x	x
67023	PRIMA LED 1.2ft ABS 1600/840 DALI	x	x	x	x	x	x
67033	PRIMA LED 1.2ft ABS 2200/840 DALI	x	x	x	x	x	x
67043	PRIMA LED 1.4ft ABS 2600/840 DALI	67143	67343	67047	67048	67347	67348
67053	PRIMA LED 1.4ft ABS 3200/840 DALI	67153	67353	67057	67058	67357	67358
67063	PRIMA LED 1.4ft ABS 4400/840 DALI	67163	67363	67067	67068	67367	67368
67860	PRIMA LED 1.4ft ABS 6400/840 DALI	67861	67862	x	x	x	x
67073	PRIMA LED 1.5ft ABS 3250/840 DALI	67173	67373	67077	67078	67377	67378
67083	PRIMA LED 1.5ft ABS 4000/840 DALI	67183	67383	67087	67088	67387	67388
67093	PRIMA LED 1.5ft ABS 5500/840 DALI	67193	67393	67097	67098	67397	67398
67890	PRIMA LED 1.5ft ABS 8000/840 DALI	67891	67892	x	x	x	x

PRIMA LED ABSc DALI

Digital dimmable driver DALI - stainless clips (c)

Code	Type	1F	3F	M1h	M3h	3F M1h	3F M3h
67213	PRIMA LED 1.2ft ABSc 1300/840 DALI	x	x	x	x	x	x
67223	PRIMA LED 1.2ft ABSc 1600/840 DALI	x	x	x	x	x	x
67233	PRIMA LED 1.2ft ABSc 2200/840 DALI	x	x	x	x	x	x
67243	PRIMA LED 1.4ft ABSc 2600/840 DALI	67543	67643	67247	67248	67647	67648
67253	PRIMA LED 1.4ft ABSc 3200/840 DALI	67553	67653	67257	67258	67657	67658
67263	PRIMA LED 1.4ft ABSc 4400/840 DALI	67563	67663	67267	67268	67667	67668
67960	PRIMA LED 1.4ft ABSc 6400/840 DALI	67961	67962	x	x	x	x
67273	PRIMA LED 1.5ft ABSc 3250/840 DALI	67573	67673	67277	67278	67677	67678
67283	PRIMA LED 1.5ft ABSc 4000/840 DALI	67583	67683	67287	67288	67687	67688
67293	PRIMA LED 1.5ft ABSc 5500/840 DALI	67593	67693	67297	67298	67697	67698
67990	PRIMA LED 1.5ft ABSc 8000/840 DALI	67991	67992	x	x	x	x

Example of type marking: 67693 = PRIMA LED 1.5ft ABSc 5500/840 DALI **3F**

LEGEND

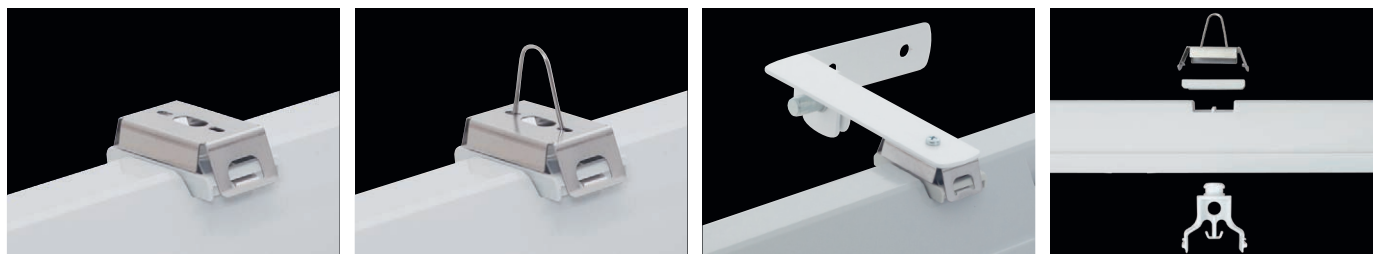
- DALI** – version with digital dimmable driver DALI
- 1F** – 1 phase wiring cables for through-wiring
- 3F** – 3 phase wiring cables for through-wiring

- M1h** – emergency back-up source with operating time of 1 hour [SA] for both permanent and emergency illumination
- M3h** – emergency back-up source with operating time of 3 hours [SA] for both permanent and emergency illumination

Batteries must be formatted before their putting into operation. Assembly instructions must be observed at installation.

LIGHT FITTING ATTACHMENT

- a) Directly to a ceiling or a wall with the use of screws and stainless brackets
- b) Suspension with the use of stainless hooks
- c) Attachment with the use of side hangers to the wall



LIGHT FITTING DETAILED VIEW

PRIMA LED ABS

