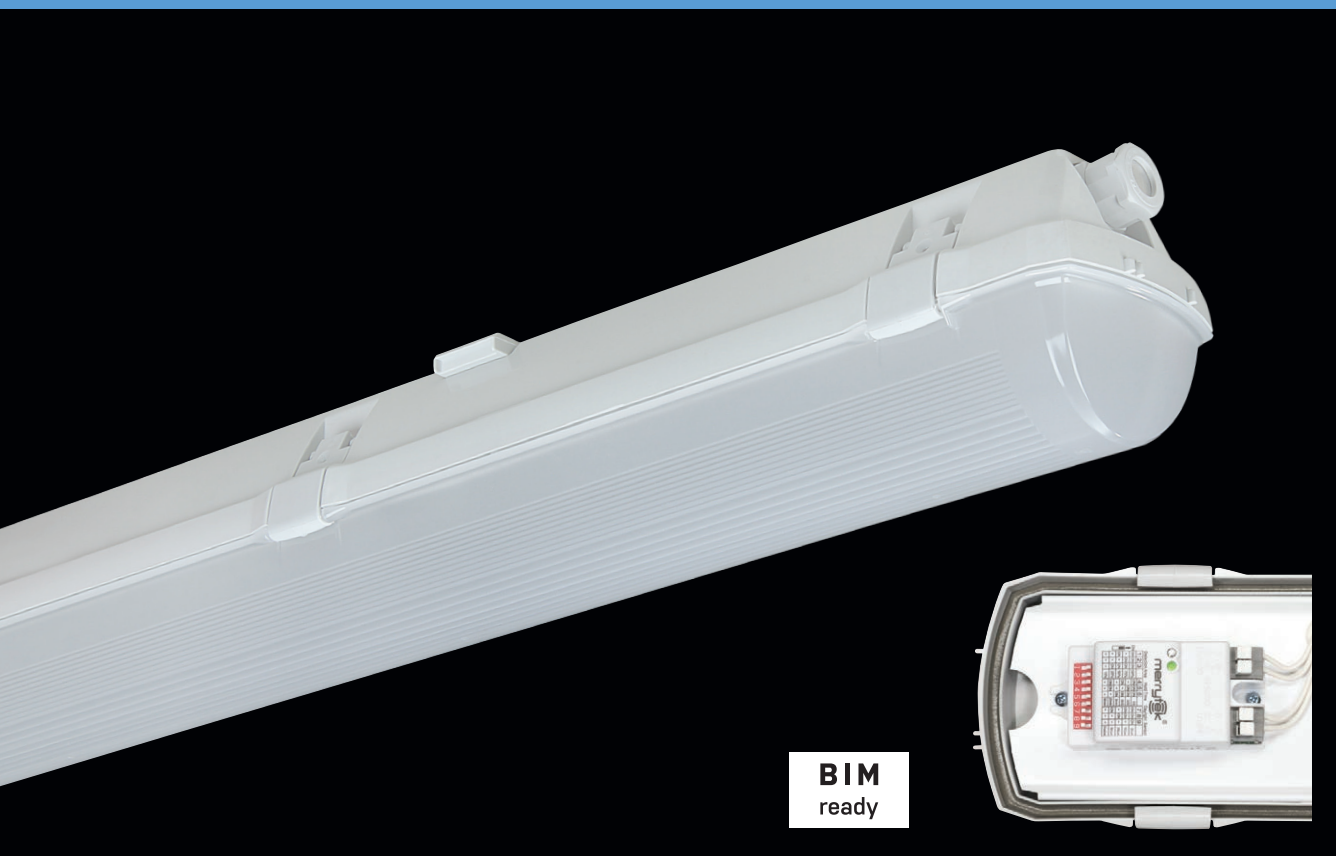


# PRIMA LED Sensor



**BIM**  
ready

... dustproof, waterproof and impact-resistant.

## USE

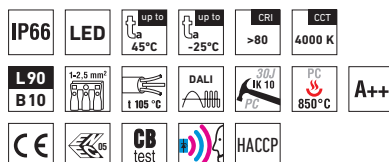
The light fitting is suitable for industrial indoor and outdoor roofed spaces, warehouses, sports areas, workshops, garages, transport terminals, utility structures and laboratories without a danger of explosion of gas, dust and combustible fumes.

The light fitting is resistant to dust, moisture and spouting water. The body and the diffuser made of polycarbonate (PC) have the increased resistance against deformation and impact.

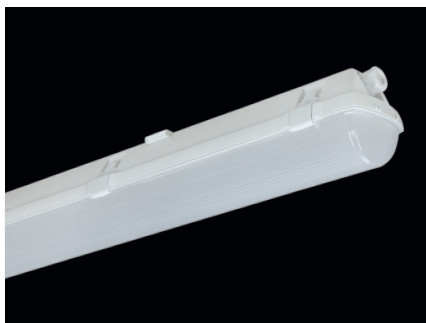
(It is necessary to consider exhalation in the air which can reduce the usability of the plastic at installations in an aggressive environment, see also page 193).

## ADVANTAGES

- Light fitting protection IP66
- Maximum ambient temperature up to  $t_a = 45^\circ\text{C}$
- Lifetime: 50,000 hours / L90B10
- Diffuser: translucent polycarbonate (PC) = high mechanical resistance
- Body: grey polycarbonate (PC) = high mechanical resistance
- Up to 45 % lower electricity consumption when compared to tubes T5
- Current driver with the possibility of constant luminous flux for whole lifetime (CLO)
- Constant luminous flux even in ambient temperature of  $-25^\circ\text{C}$
- Standard model - CRI > 80: 4000 K
- At request CRI > 80: 3000 K, 5000 K, 6500 K, CRI > 90: 3000 K, 4000 K
- With built-in **microwave motion sensor**
- The possibility of setting the sensor using the DIP switch
- It can be delivered in dimmable or emergency version
- Certification: ESČ, CB, HACCP

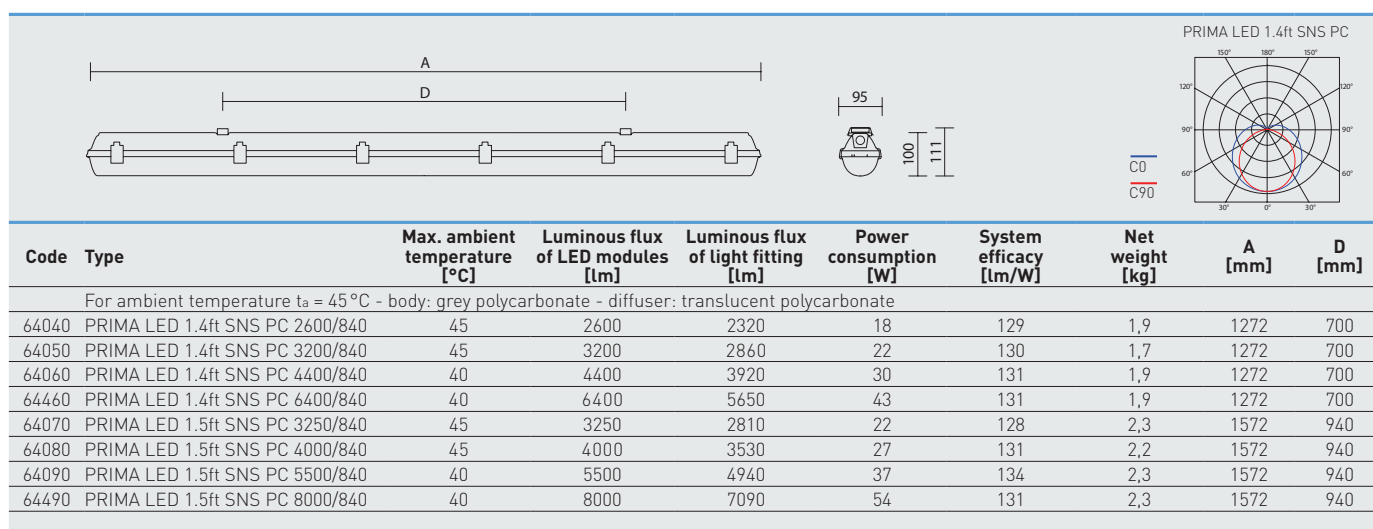


## PRIMA LED SNS PC, PCc



## TECHNICAL DESCRIPTION

- Light fitting protection: IP66
- Maximum ambient temperature:  $t_a = 45^\circ\text{C}$ , Maximum ambient temperature:  $t_a = 25^\circ\text{C}$  (version with emergency back-up source for 1 or 3 hours; M1h, M3h)
- Maximum system efficacy: 134 lm/W
- The watt and lumen values can vary by  $\pm 7,5\%$
- Standard model - CRI > 80: 4000 K
- Lifetime: 50,000 hours / L90B10
- Diffuser: translucent polycarbonate (PC), UV stable, impact-resistant
- Body: grey polycarbonate (PC), UV stable, impact-resistant
- Reflector: steel sheet, white colour (RAL 9003)
- Clips: polyamide + 15 % glass fibre or stainless steel + polyamide
- Sealing: polyurethane (PUR), foamed body groove
- Cable glands: screwed PG 13.5, or rubber (SBS)
- Distance part: polyamide + 10 % glass fibre
- Terminal block: screwless, three-pole (basic version), or screwed
- Installation: package contains stainless hooks and stainless brackets
- Electric equipment: LED modules, current driver or digital dimmable driver DALI
- Motion sensor: 360° range, switch on height 1 – 6 m, time range 5 sec – 30 min, switch-on sensitivity 2 – 50 lux



64050 PRIMA LED 1.4ft SNS PC 3200/840 = suitable replacement for T8 fl. tube light fitting PRIMA 136 – 1 × 36 W  
 64460 PRIMA LED 1.4ft SNS PC 6400/840 = suitable replacement for T8 fl. tube light fitting PRIMA 236 – 2 × 36 W  
 64080 PRIMA LED 1.5ft SNS PC 4000/840 = suitable replacement for T8 fl. tube light fitting PRIMA 158 – 1 × 58 W  
 64490 PRIMA LED 1.5ft SNS PC 8000/840 = suitable replacement for T8 fl. tube light fitting PRIMA 258 – 2 × 58 W

## PRIMA LED SNS PC

Code	Type
64040	PRIMA LED 1.4ft SNS PC 2600/840
64050	PRIMA LED 1.4ft SNS PC 3200/840
64060	PRIMA LED 1.4ft SNS PC 4400/840
64460	PRIMA LED 1.4ft SNS PC 6400/840
64070	PRIMA LED 1.5ft SNS PC 3250/840
64080	PRIMA LED 1.5ft SNS PC 4000/840
64090	PRIMA LED 1.5ft SNS PC 5500/840
64490	PRIMA LED 1.5ft SNS PC 8000/840

Non-dimmable driver - plastic clips

	1F	3F	M1h	M3h	3F M1h	3F M3h
64140	64340	64044	64045	64344	64345	
64150	64350	64054	64055	64354	64355	
64160	64360	64064	64065	64364	64365	
64461	64462	x	x	x	x	
64170	64370	64074	64075	64374	64375	
64180	64380	64084	64085	64384	64385	
64190	64390	64094	64095	64394	64395	
64491	64492	x	x	x	x	

## PRIMA LED SNS PCc

Code	Type
64240	PRIMA LED 1.4ft SNS PCc 2600/840
64250	PRIMA LED 1.4ft SNS PCc 3200/840
64260	PRIMA LED 1.4ft SNS PCc 4400/840
64760	PRIMA LED 1.4ft SNS PCc 6400/840
64270	PRIMA LED 1.5ft SNS PCc 3250/840
64280	PRIMA LED 1.5ft SNS PCc 4000/840
64290	PRIMA LED 1.5ft SNS PCc 5500/840
64790	PRIMA LED 1.5ft SNS PCc 8000/840

Non-dimmable driver - stainless clips (c)

	1F	3F	M1h	M3h	3F M1h	3F M3h
64540	64640	64244	64245	64644	64645	
64550	64650	64254	64255	64654	64655	
64560	64660	64264	64265	64664	64665	
64761	64762	x	x	x	x	
64570	64670	64274	64275	64674	64675	
64580	64680	64284	64285	64684	64685	
64590	64690	64294	64295	64694	64695	
64791	64792	x	x	x	x	

Example of type marking: 64644 = PRIMA LED 1.4ft SNS PC 2600/840 **3F M1h**

## PRIMA LED SNS PC CORRIDOR

Code	Type	Digital dimmable driver - plastic clips					
		1F	3F	M1h	M3h	3F M1h	3F M3h
64043	PRIMA LED 1.4ft SNS PC 2600/840 CORRIDOR	64143	64343	64047	x	64347	x
64053	PRIMA LED 1.4ft SNS PC 3200/840 CORRIDOR	64153	64353	64057	x	64357	x
64063	PRIMA LED 1.4ft SNS PC 4400/840 CORRIDOR	64163	64363	64067	x	64367	x
64073	PRIMA LED 1.5ft SNS PC 3250/840 CORRIDOR	64173	64373	64077	64078	64377	64378
64083	PRIMA LED 1.5ft SNS PC 4000/840 CORRIDOR	64183	64383	64087	64088	64387	64388
64093	PRIMA LED 1.5ft SNS PC 5500/840 CORRIDOR	64193	64393	64097	64098	64397	64398

## PRIMA LED SNS PCc CORRIDOR

Code	Type	Digital dimmable driver - stainless clips (c)					
		1F	3F	M1h	M3h	3F M1h	3F M3h
64243	PRIMA LED 1.4ft SNS PCc 2600/840 CORRIDOR	64543	64643	64247	x	64647	x
64253	PRIMA LED 1.4ft SNS PCc 3200/840 CORRIDOR	64553	64653	64257	x	64657	x
64263	PRIMA LED 1.4ft SNS PCc 4400/840 CORRIDOR	64563	64663	64267	x	64667	x
64273	PRIMA LED 1.5ft SNS PCc 3250/840 CORRIDOR	64573	64673	64277	64278	64677	64678
64283	PRIMA LED 1.5ft SNS PCc 4000/840 CORRIDOR	64583	64683	64287	64288	64687	64688
64293	PRIMA LED 1.5ft SNS PCc 5500/840 CORRIDOR	64593	64693	64297	64298	64697	64698

Example of type marking: 64693 = PRIMA LED 1.5ft SNS PCc 5500/840 CORRIDOR **3F**

## LEGEND

**CORRIDOR** – model with digitally dimmable driver. Settings can be configured – in primary setting the light will turn on to a maximum output when triggered by motion and stay in the mode for 5 minutes, then its intensity will decrease to 10 %.

**1F** – 1 phase wiring cables for through-wiring  
**3F** – 3 phase wiring cables for through-wiring

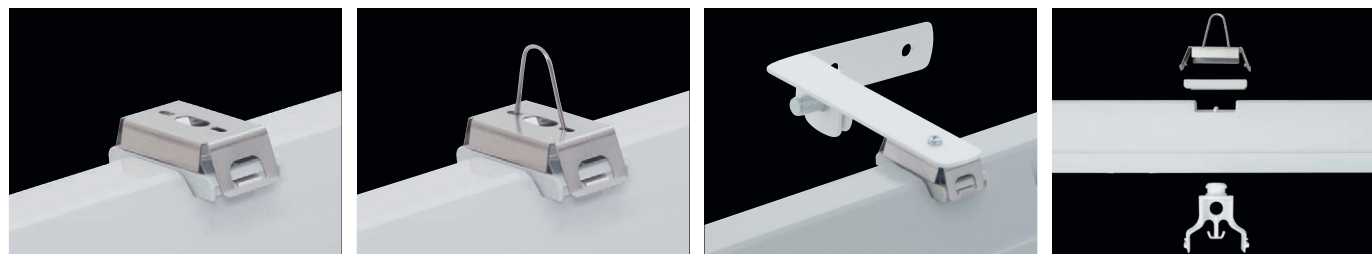
**M1h** – emergency back-up source with operating time of 1 hour (SA) for both permanent and emergency illumination

**M3h** – emergency back-up source with operating time of 3 hours (SA) for both permanent and emergency illumination

Batteries must be formatted before their putting into operation. Assembly instructions must be observed at installation.

## LIGHT FITTING ATTACHMENT

- Directly to a ceiling or a wall with the use of screws and stainless brackets
- Suspension with the use of stainless hooks
- Attachment with the use of side hangers to the wall



## LIGHT FITTING DETAILED VIEW

PRIMA LED SNS

