



... for explosion hazard environment group II, category 2 (zone 1, 21 and 2, 22).

## USE

The metal light fitting with satinated tempered safety glass is suitable for environment with hazard of explosion of gases, vapours and dust for zones 1, 21 and 2, 22. It meets the requirements of the European Community Directive No. 2014/34/EU. It is resistant against chemically aggressive environment, therefore it fits for industrial premises like chemical factories, plants for processing of gases and oil, power plants, army facilities, automotive factories, laboratories and other facilities of heavy and mechanical engineering. The light fitting in IP66 protection is resistant against dust and splashing water.

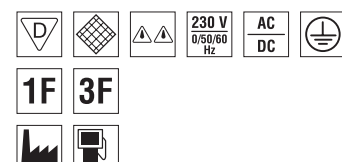
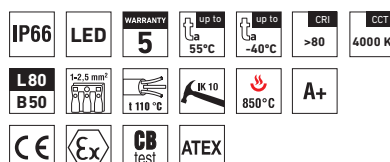
## USE IN ENVIRONMENT WITH HAZARD OF EXPLOSION

AR19ATEX001	Light fitting with disconnector	Ex II 2G Ex db eb mb op is IIC T4 Gb
		Ex II 2D Ex tb IIIC T 68°C IP66 Db
	Light fitting without disconnector	Ex II 2G Ex eb mb op is IIC T4 Gb
		Ex II 2D Ex tb IIIC T 68°C IP66 Db

The basic requirements for safety and health protection are secured by verification of conformity with EN 60079-0, EN 60079-7, EN 60079-18, EN 60079-1, EN 60079-28 and EN 60079-31.

## ADVANTAGES

- Light fitting protection **IP66**
- High temperature resistance on a range from **t<sub>a</sub> = -40 °C to t<sub>a</sub> = 55 °C**
- For hazardous areas of zones 1, 21 and 2, 22
- Lifetime: 75 000 hours / L80B50 at t<sub>a</sub> = 55 °C, 110 000 hours / L70B50 at t<sub>a</sub> = 55 °C
- Plastic, metal or armoured ATEX cable glands can be selected
- Wide fixing options including recessed frame for false ceiling
- Up to 45 % lower power consumption as compared to fluorescent tubes
- Constant luminous flux even at ambient temperature of -40 °C
- Standard model CRI > 80: 4000 K, at request CRI > 80: 6000 K
- Optional through-wiring of up to 7 wires at reflector



## TrEx



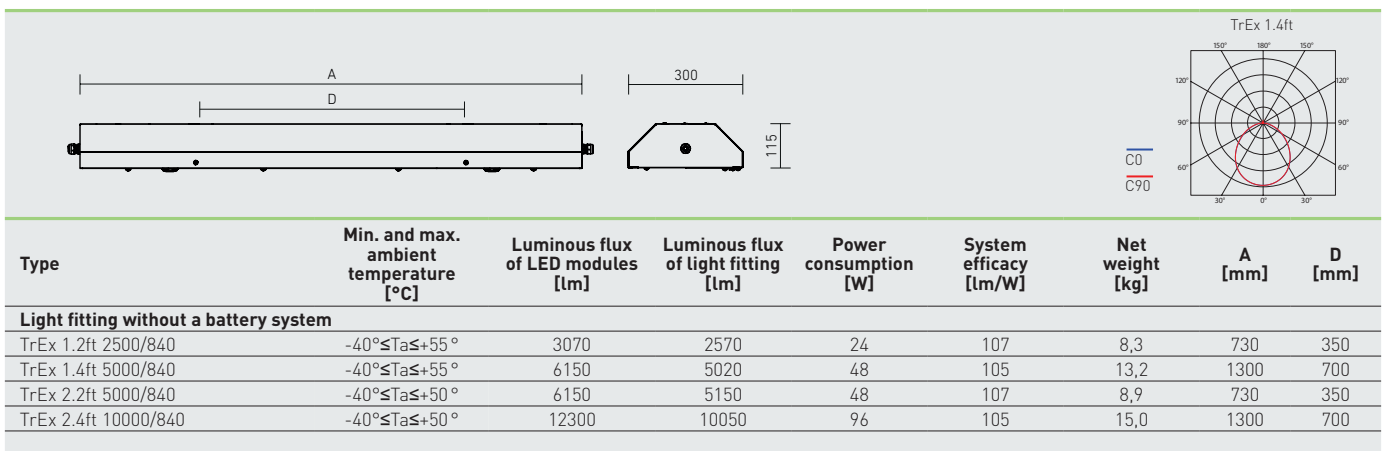
## TECHNICAL DESCRIPTION

- Light fitting protection: IP66
- Minimum ambient temperature:  $t_a = -40^\circ\text{C}$
- Maximum ambient temperature:  $t_a = 55^\circ\text{C}$
- Maximum system efficacy: 107 lm/W
- CRI > 80: 4000 K
- Lifetime: 75 000 hours / L80B50 at  $t_a = 55^\circ\text{C}$ , 110 000 hours / L70B50 at  $t_a = 55^\circ\text{C}$
- Body: powder coated steel sheet RAL 9003
- Diffuser: sated tempered safety glass
- Sealing: glued EPDM
- Cable glands: plastic ATEX cable glands M20 x 1,5
- Terminal block: ATEX, screwless WAGO, Cable cross-section max: 4 mm<sup>2</sup>
- Installation: the package includes suspensory eyes 2 x M6
- Electric equipment: LED modules, current driver and disconnecter with ATEX certificate

- Halogen-free wires with higher thermal resistance
- The watt and lumen values can vary by  $\pm 7,5\%$

## AT REQUEST

- CRI > 80: 6000 K
- Body: INOX
- Design modification for fixing and connecting in the false ceiling
- Diffuser: transparent tempered safety glass
- Cable glands: metal or armoured ATEX cable glands M20 x 1,5 or M25 x 1,5
- Increased number of cable entries on sides and in upper part of light fitting if recessed frame for false ceiling mounted
- INOX suspensory accessories



## TrEx DIS

Code	Type
62610	TrEx 1.2ft 2500/840 DIS
62620	TrEx 1.4ft 5000/840 DIS
62630	TrEx 2.2ft 5000/840 DIS
62640	TrEx 2.4ft 10000/840 DIS

## Light fitting with disconnecter

	1F	3F	M1h	M3h	3F M1h	3F M3h
62611	62613	x	x	x	x	x
62621	62623	x	x	x	x	x
62631	62633	x	x	x	x	x
62641	62643	x	x	x	x	x

## TrEx

Code	Type
62650	TrEx 1.2ft 2500/840
62660	TrEx 1.4ft 5000/840
62670	TrEx 2.2ft 5000/840
62680	TrEx 2.4ft 10000/840

## Light fitting without disconnecter

	1F	3F	M1h	M3h	3F M1h	3F M3h
62651	62653	x	x	x	x	x
62661	62663	x	x	x	x	x
62671	62673	x	x	x	x	x
62681	62683	x	x	x	x	x

## TrEx DIS INOX

Code	Type
62510	TrEx 1.2ft 2500/840 DIS INOX
62520	TrEx 1.4ft 5000/840 DIS INOX
62530	TrEx 2.2ft 5000/840 DIS INOX
62540	TrEx 2.4ft 10000/840 DIS INOX

## Light fitting with disconnecter, INOX body

	1F	3F	M1h	M3h	3F M1h	3F M3h
62511	62513	x	x	x	x	x
62521	62523	x	x	x	x	x
62531	62533	x	x	x	x	x
62541	62543	x	x	x	x	x

## TrEx INOX

Code	Type
62550	TrEx 1.2ft 2500/840 INOX
62560	TrEx 1.4ft 5000/840 INOX
62570	TrEx 2.2ft 5000/840 INOX
62580	TrEx 2.4ft 10000/840 INOX

## Light fitting without disconnecter, INOX body

	1F	3F	M1h	M3h	3F M1h	3F M3h
62551	62553	x	x	x	x	x
62561	62563	x	x	x	x	x
62571	62573	x	x	x	x	x
62581	62583	x	x	x	x	x

**LEGEND**

- 1F** - 1 phase wiring cables for through-wiring
- 3F** - 3 phase wiring cables for through-wiring

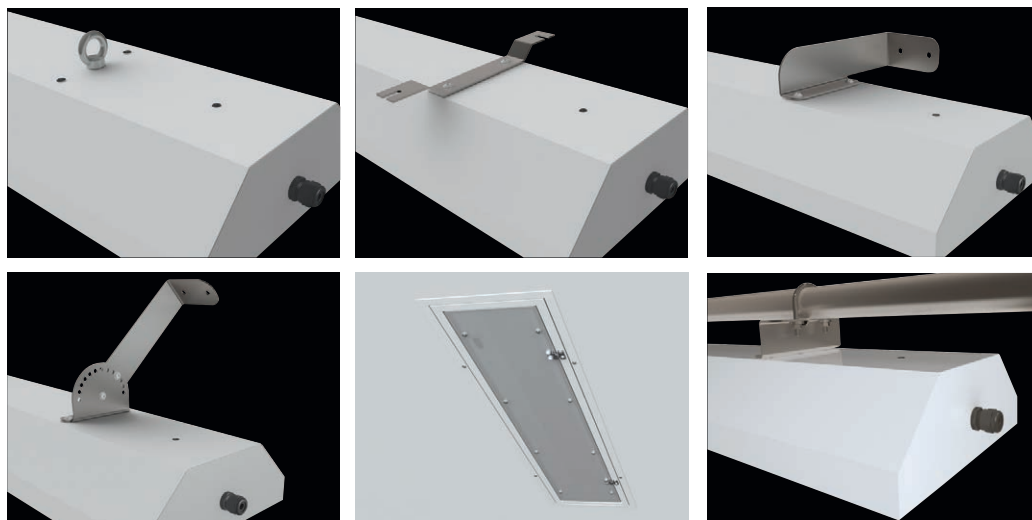
**CERTIFICATION**

AR19ATEX001		
Directive		Standards
2014/34/EU	ATEX	EN 60079-0:2012 + A11:2013
		EN 60079-1:2014
		EN 60079-7:2015
		EN 60079-18:2015
		EN 60079-28:2015
		EN 60079-31:2014
2014/35/EU	General requirements and standards	EN 60598-1:2015
		EN 60598-2-1:89
		EN 62471:2008
		EN 55015:2013
		EN 61547:2009
		EN 61000-3-2:14
2011/65/EN	RoHS	EN 61000-3-3:13
		EN 50581:2012

	Identification of external influences	Classification of spaces	
		Identification	Establishment regulation
Hazard of explosion of flammable dust	BE3N1	ZONE 21, 22	EN 60079-17
			EN 60079-14
			EN 60079-10-2
Hazard of explosion of flammable gases and vapours	BE3N2	ZONE 1, 2	EN 60079-10-1
			EN 60079-14
			EN 60079-17

**LIGHT FITTING ATTACHMENT**

- a) Suspension eyes 2×M6 - in standard model
- b) Holders directly on the ceiling
- c) Side suspensions on the wall
- d) Adjustable side suspensions on the wall
- e) Recessed frame for false ceiling
- f) Holders on tube structures



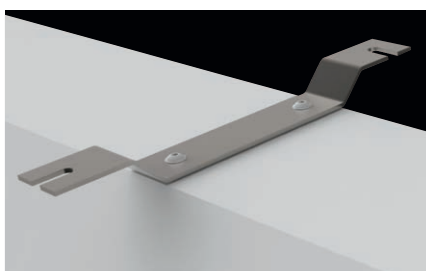
**LIGHT FITTING DETAILED VIEW**

TrEx



## Ceiling suspension

Serves for hanging the light fitting on the ceiling.



Code	Type	Description	Weight [kg]
62694	TrEx suspension 3	Metal holder for direct suspending on the ceiling. Holder - 2 ks, screw M6×16 - 4 pcs assembly.	0,6
62695	TrEx inox suspension 3	Stainless-steel holder for direct suspending on the ceiling. Holder - 2 ks, screw M6×16 - 4 pcs for assembling.	0,6

## Side suspension

Serves for firm fixation of the light fitting on the wall.



Code	Type	Description	Weight [kg]
62690	TrEx suspension 1	Metal holder for direct suspension on the wall. Holder - 2 pcs, screw M6×16 - 4 pcs for assembling	1,4
62691	TrEx inox suspension 1	Stainless-steel holder for direct suspension on the wall. Holder - 2 pcs, screw M6×16 - 4 pcs for assembling	1,4

## Adjustable side suspension

Serves for hanging the light fitting on the wall, ceiling, sloped surfaces, and enables positioning the light fitting from 0 to 90°, with a step of 15°.



Code	Type	Description	Weight [kg]
62692	TrEx suspension 2	Metal holder for direct suspending on the wall or ceiling. Holder - 2 pcs, screw M6×16 - 8 pcs for assembling.	1,5
62693	TrEx inox suspension 2	Stainless-steel holder for direct suspending on the wall and ceiling. Holder - 2 pcs, screw M6×16 - 8 pcs for assembling.	1,5

## Recessed frame for false ceiling

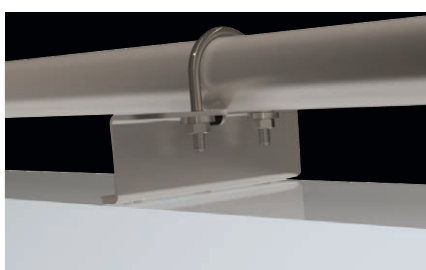
Serves for fixing the light fitting into the false ceiling by means of a recessed frame and modified customize body.



Code	Type	Description	Weight [kg]
62698	TrEx frame	Recessed frame for false ceiling serves for fixing the light fitting into the false ceiling. Screw M6×16 - 4 pcs, screw M6×60 - 4 pcs, washer 6,2 - 4 pcs, suspension M6 for plasterboard - 4 pcs for assembling.	2,8

## Pipeline holder

Serves for suspending the light fitting to tube structures with a diameter of ¾" - 2" by means of pipeline clamps.



Code	Type	Description	Weight [kg]
62696	TrEx holder	Metal holder for direct suspending on the tube structures. Holder - 2 pcs, screw M6×16 - 4 pcs, nut M8 - 4 pcs, washer 8.2 - 4 pcs, pipeline clamp ETR M8 - 2 pcs for assembling.	0,8
62697	TrEx inox holder	Stainless-steel holder for direct suspending to tube structures. Holder - 2 pcs, screw M6×16 - 4 pcs, nut M8 - 4 pcs, washer 8.2 - 4 pcs, pipeline clamp ETR M8 - 2 pcs for assembling.	0,8