

PRIMA MAX

NEW



... for extreme temperatures -40 °C to +65 °C.

USE

Designed to be installed indoors, in sheltered outdoor spaces as well as in spaces **with extreme ambient temperatures as low as -40 °C or as high as +65 °C**.

A ventilation membrane equalizes pressures while blocking water and contaminants that build up inside of the fitting as a result of temperature fluctuations.

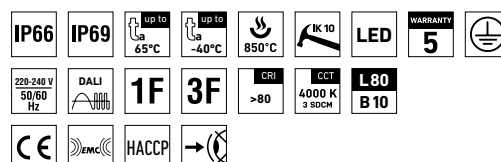
Highly recommended for **heating plants, metallurgical plants, glassworks, freezing plants, cooling plants** and other spaces with no explosion hazard.

IP69-rated and HACCP-compliant, the fitting's design also makes it a great choice for the food industry.

Emissions in the environment of use may reduce the usability of the plastics.

ADVANTAGES

- Light fitting protection **IP66 / IP69**
- High temperature resistance in a range from **ta = -40 °C to ta = 65 °C**
- Lifetime: 50 000 hours / L80B10
- **Variable suspension pitch**, optional installation of light fitting even on an existing structure on which the original light fittings were suspended
- Optional throughwiring (up to 7 wires inside the light fitting)
- Standard model CRI > 80: 4000 K
- On request CRI > 80: 3000 K, 5000 K, 6500 K
- CRI > 90: 3000 K, 4000 K, 5000 K, 6500 K
- Optional delivery in dimmable version
- Certificates: **HACCP**

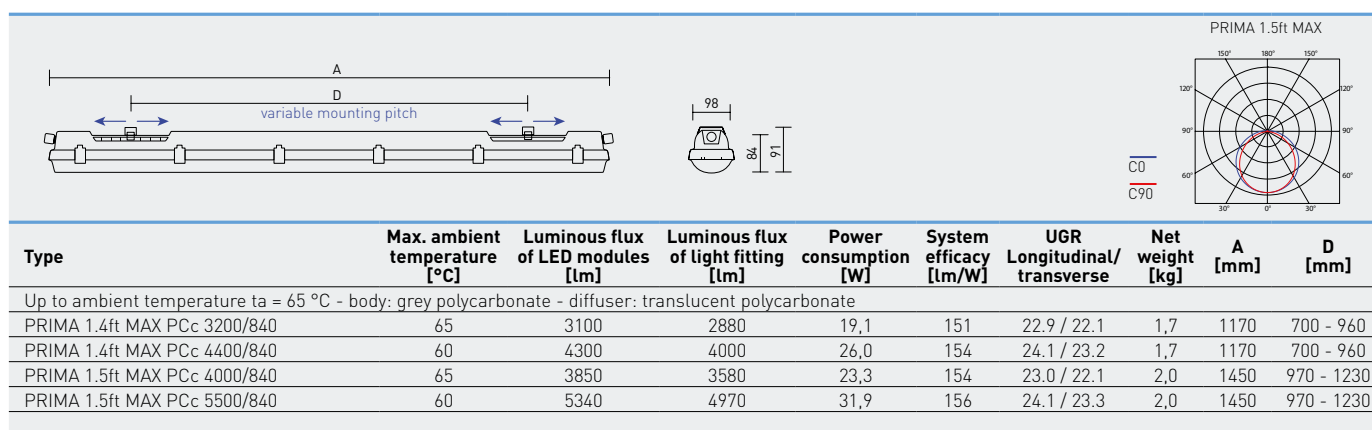


PRIMA MAX PCc



TECHNICAL DESCRIPTION

- Light fitting protection: **IP66 / IP69**
- Minimum ambient temperature: **ta = -40 °C**
- Maximum ambient temperature: **ta = 65 °C**
- Lifetime: 50 000 hours / L80B10
- Maximum light fitting efficiency: **156 lm/W**
- **CRI > 80: 4000 K** – standard
- CRI > 80: 3000 K, 5000 K, 6500 K - on request
- CRI > 90: 3000 K, 4000 K, 5000 K, 6500 K - on request
- MacAdam = 3 SDCM
- Diffuser: **translucent PC** (high mechanical resistance, UV stability)
- Body: grey PC (high mechanical resistance, UV stability)
- **A ventilation membrane** in the base equalizes pressures while blocking water and contaminants
- Reflector: steel sheet, white colour (RAL 9003)
- **Mounting clips:** stainless steel, stainless steel hooks included
- Clips: stainless steel + polyamide
- Sealing: polyurethane (PUR), foamed body groove
- Cable glands: screwed PG 13.5
- Terminal block: screwless, three-pole (basic version), or screwed
- The values stated for power consumption and luminous flux are in a tolerance of $\pm 7.5\%$



PRIMA MAX PCc

stainless clips (c)

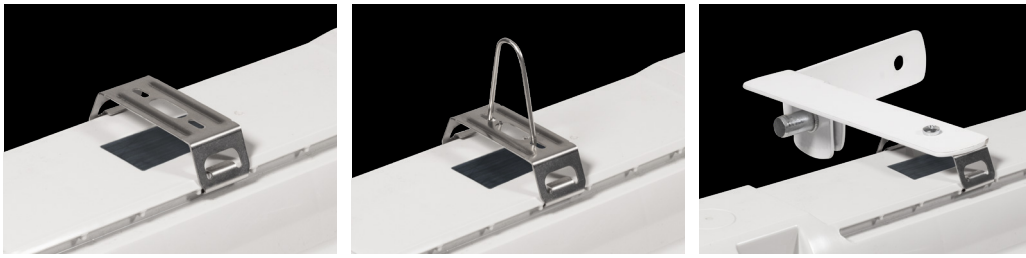
Code	Type	1F	3F	M1h	M3h	DALI	DALI 3F
107086	PRIMA 1.4ft MAX PCc 3200/840	107087	107088	x	x	107089	107090
107091	PRIMA 1.4ft MAX PCc 4400/840	107093	107095	x	x	107097	107099
107092	PRIMA 1.5ft MAX PCc 4000/840	107094	107096	x	x	107098	107100
107101	PRIMA 1.5ft MAX PCc 5500/840	107102	107103	x	x	107104	107105

LEGEND

1F	1-phase 3 core through-wiring in the luminaire	DALI	version with digital dimmable driver DALI
3F	3-phase 5 core through-wiring in the luminaire	DALI 1F	1-phase 5 core through-wiring in the luminaire
M1h	emergency back-up source with 1 hour operating time for maintained emergency illumination	DALI 3F	3-phase 7 core through-wiring in the luminaire
M3h	emergency back-up source with 3 hour operating time for maintained emergency illumination	DALI 3F Mxh	3-phase 7 core through-wiring in the luminaire (L3 used for emergency unit unswitched power supply)
3F Mxh	3-phase 5 core through-wiring in the luminaire (L3 used for emergency unit unswitched power supply)		

LIGHT FITTING ATTACHMENT

- a) Directly to a ceiling or a wall with the use of screws and stainless brackets
- b) Suspension with the use of stainless hooks
- c) Attachment with the use of side hangers to the wall - is not included in accessories



LIGHT FITTING DETAILED VIEW

PRIMA MAX

